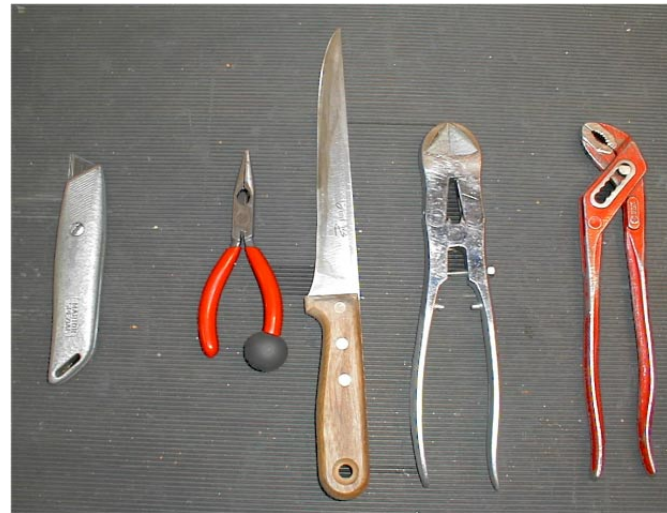


Example: EFS 50 ("ELAFLO")

When assembling "M" hoses according to EN 12 115 the metallic conductors are connected. Electrical resistance of completed hose assembly: max. 100 Ω



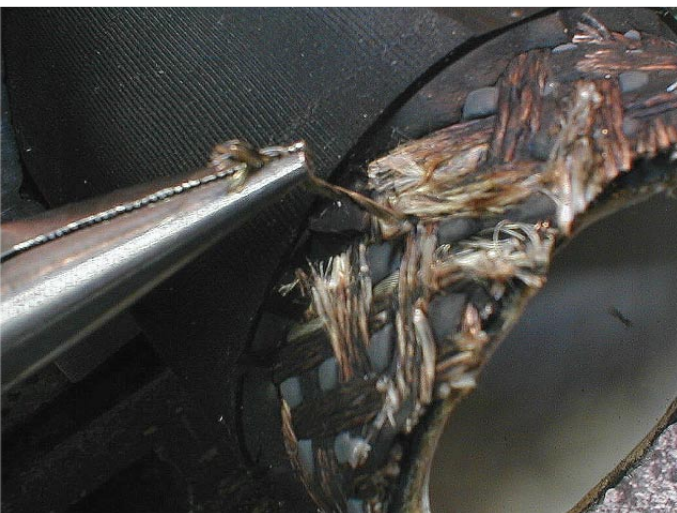
Required tools



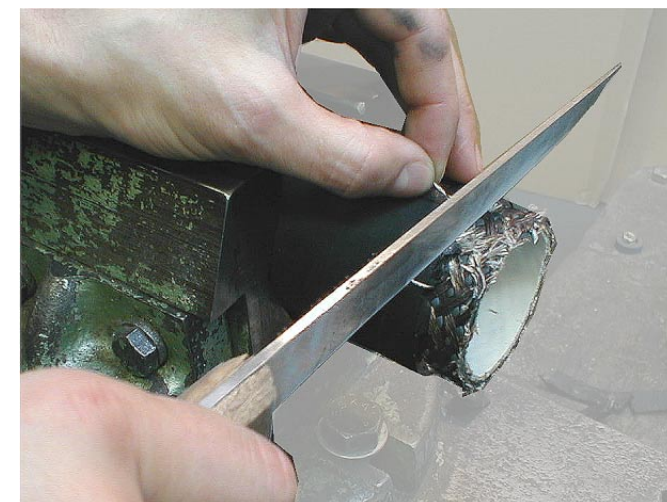
Cut the cover all around, one longitudinal cut. Cut should not be too deep to avoid damage of the copper strands.



Put hose into vice. Remove cover all around.



Expose both copper strands with cutter and pliers.



Bend strands backwards and shorten hose.



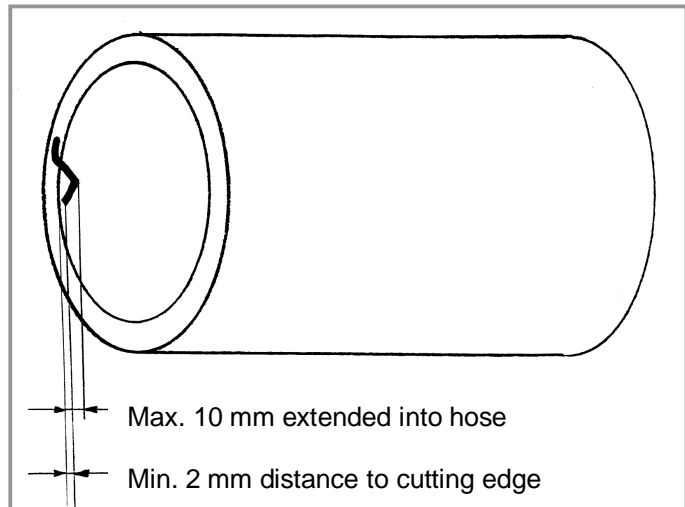
Pinch off helix.



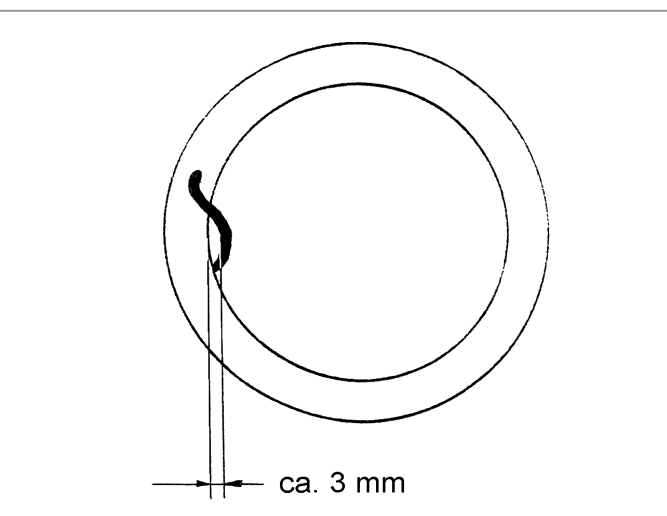
Bend helix inside with pipe wrench. Press the pointed end of the helix close against the tube ...



... to avoid damages to the hose tail during assembly.



Final position after bending the helix.



Distance of ca. 3 mm should remain between helix bent and the tube after pressing the pointed end inside.



Shorten copper strands that they extend ca. 10 mm into the hose. Bend strands inside in longitudinal direction.