

The instructions shown below will allow you to safely access the Nose Piece in the Connector Assembly of the nozzle. Please follow each step carefully to ensure that the nozzles' continuous design functions and performances are upheld.

Disassembly



Carefully remove Grub Screw with 3mm Hex key



There will be residual Loctite which should be removed with a 5mm drill bit.



Remove the thirty-one (31) ball bearings by holding the nozzle and rotating the Connector Nut



Once all the ball bearings are removed, the Connector Nut can be taken off.

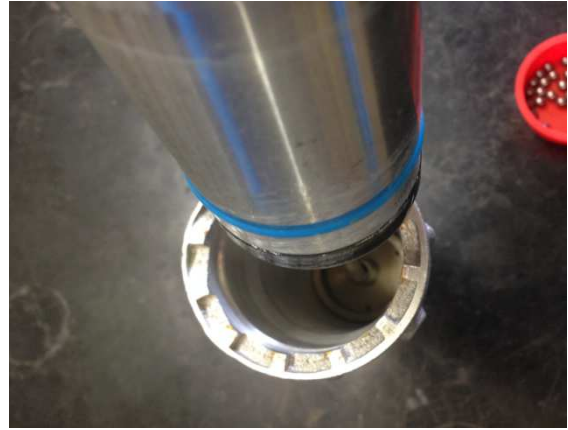


The Nose Piece can now be accessed.

Assembly



Insert the Nose Piece into the Connector Nut in the orientation shown.



Apply a small amount of Nulon lubricant or similar to the Slide Sleeve. Guide the Nozzle and Slide Sleeve into the Connector Nut.



Re-insert the thirty-one (31) ball bearings into the hole on the Connector Nut.



Once all balls are inside, apply a dab of locktite 262 or similar to the grub screw and screw until flush. Rotate Connector Nut to check for smooth movement.